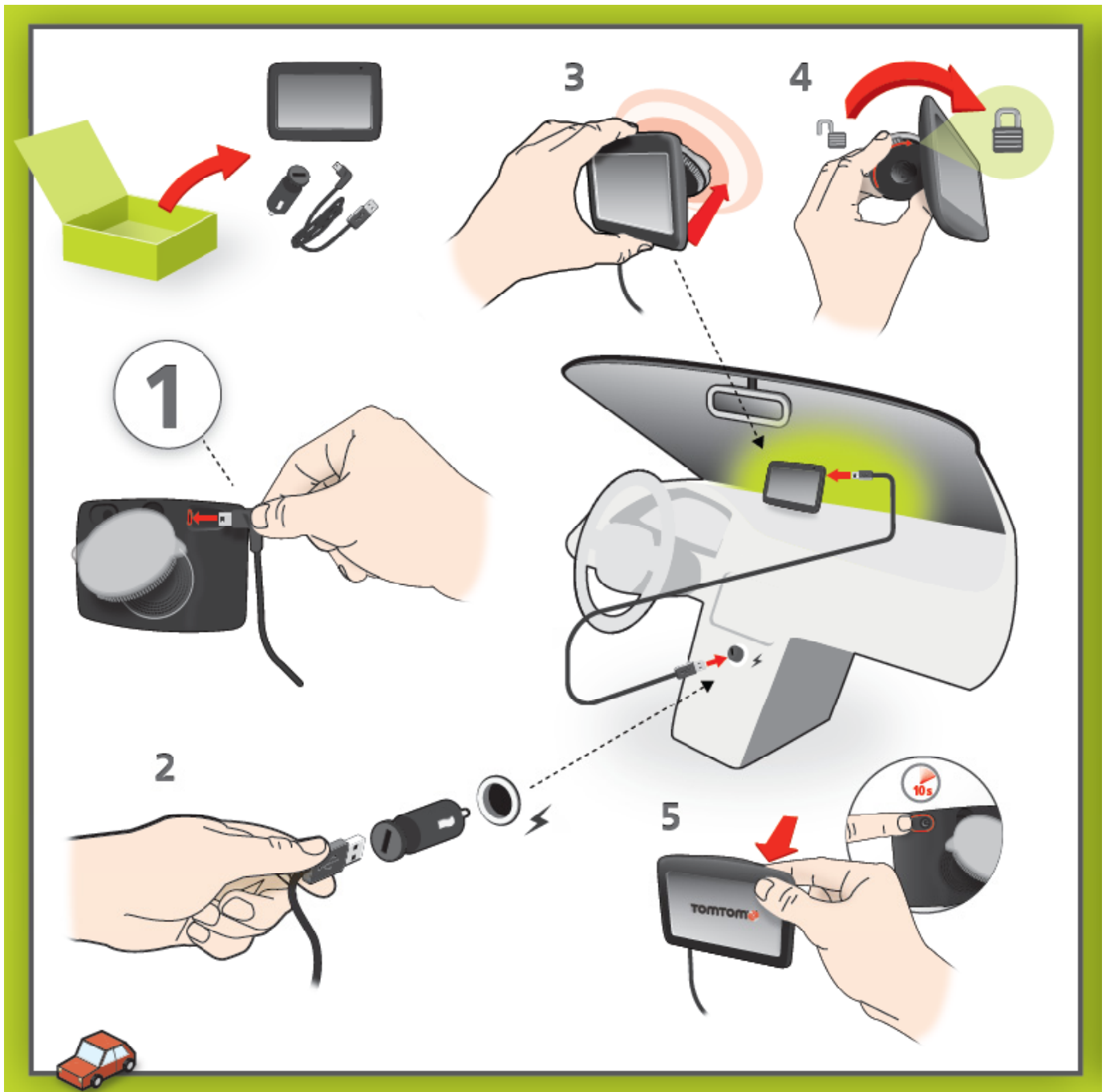


TomTom Via 160 – Getting Started



Note

- Make sure that both the mount and your windscreen are clean and dry.
- Place the device so that it does not interfere with your view of the road or any of the controls in your car.
- When you first start your TomTom Via 160, the device may need a few minutes to determine your GPS position and show your current position on the map.

TomTom Via 160 – Tips

Planning a route

Important: In the interest of safety and to reduce distractions while you are driving, you should always plan a route before you start driving.

To plan a route on your TomTom Via 160, do the following:

1. Tap the screen to open the Main menu.
2. Tap **Navigate to...**
3. Tap **Address**.
4. Enter the town or city name.
5. Enter the street name.
6. Enter the house number, then tap **Done**.
7. The location is shown on the map. Tap **Select** to continue or tap **Back** to enter another address.
8. Select the type of route you want to plan.
9. When the new route is shown, tap **Done**. *Your TomTom Via 160 starts to guide you to your destination.*
 - For more information about the route, tap **Details**.
 - To plan a different route, tap **Change route**.

About Points of Interest

Points of Interest or POIs are useful places on the map.

Here are some examples:

- Restaurants
- Hotels
- Museums
- Parking garages
- Petrol stations

Using POIs to plan a route

The following example shows how to plan a route to a Hotel/motel in a city:

1. Tap **Navigate to...** in the Main menu.
2. Tap **Point of Interest**.
3. Tap **POI in city**.
4. Enter the name of the town or city and select it when it is shown in the list.
5. Tap the arrow button to expand the list of POI categories.

Note: If you already know the name of the POI you want to use, you can tap **Search POI** to enter the name and select this location.

6. Scroll down the list and tap **Hotel/motel**. The Hotel/motel closest to your destination is shown at the top of the list.
7. Tap the name of the Hotel/motel you want to use and tap **Done** when the route has been calculated. *Your TomTom Via 160 starts to guide you to the Hotel/motel.*

Note: The following table explains the distances shown next to each POI. How the distance is measured varies depending on how you initially searched for the POI:

- POI near you - distance from your current location
 - POI in city - distance from the city centre
 - POI near Home - distance from your Home location
 - POI along route - distance from your current location
 - POI near destination - distance from your destination
-